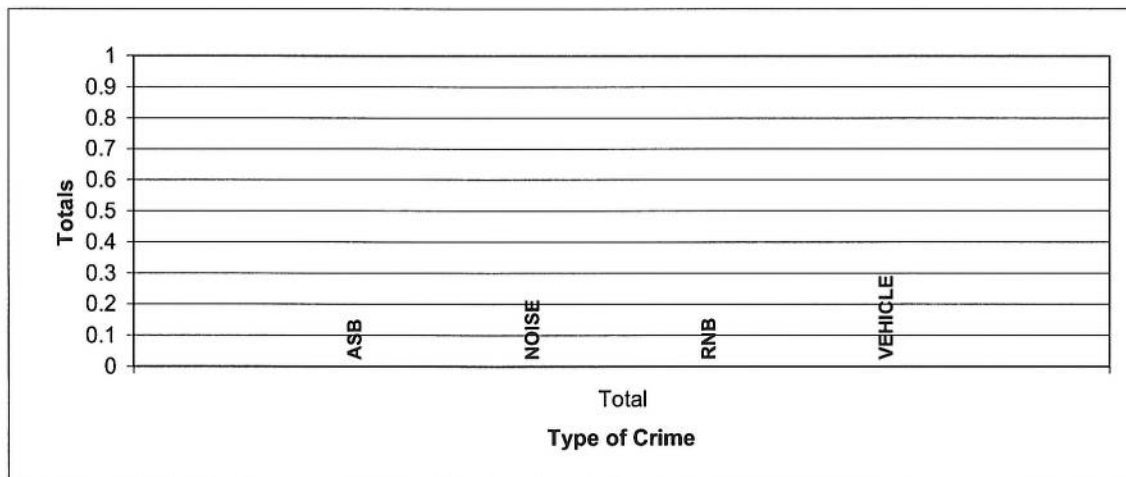


NYP ASB General Incidents Report

ASB Analysis Study Area:	=	Stanley Mews Study Area
Size of Study Area from Application	=	Please see map
Study Period Start:	=	01/01/2013
Study Period End:	=	31/12/2014
Date Study Completed	=	28/01/2015
Number of Months in Study Period	=	24
Geocoding Accuracy Rate	=	95%

ASB Incident Group	Total
ASB	0
NOISE	0
RNB	0
VEHICLE	0
Grand Total	0

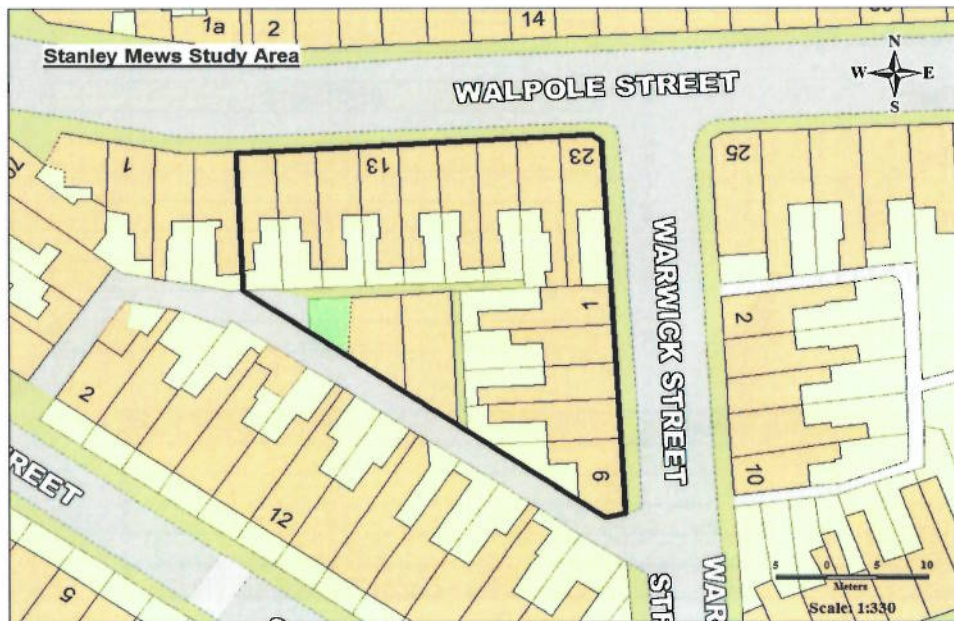
A Table of NYP ASB Incidents in the Study Area (Above) and corresponding Graph (Below)



THIS REPORT DOES NOT CONTAIN ANY NORTH YORKSHIRE POLICE ASB INCIDENTS THAT HAVE BEEN CONVERTED IN TO CRIMES

A Table of ASB by ASB Group and then Incident Heading

None



From 1st April 2011, all new ASB incidents are recorded by the type of harm they involve. Incidents are recorded as either: **ASB Personal** (where ASB impacts an individual rather than a group e.g. *comms*); **ASB Nuisance** (where ASB causes suffering to the comm

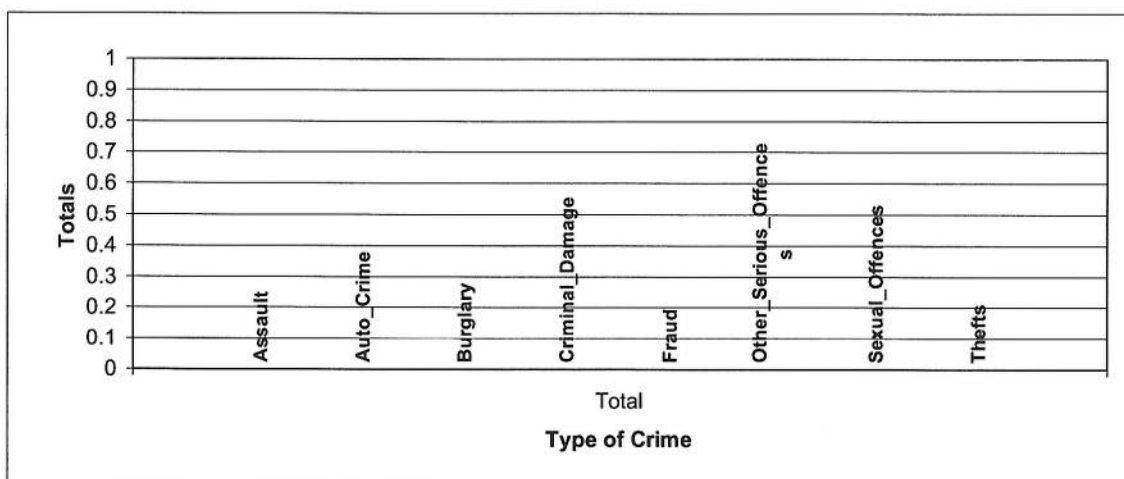
FURTHER DETAIL OF THE ABOVE DESCRIPTIONS ARE AS FOLLOWS: ABANDONED = ABANDONED CARS, COMMS = COMMUNICATIONS, VEHNUISANCE = VEHICLE NUISANCE, RNB = ROWDY AND NUISNCE BEHAVIOUR, SUBMIS = SUBSTANCE MISUSE

Crime Statistics

Crime Analysis Study Area:	=	Stanley Mews Study Area
Size of Study Area from Application	=	Please see map
Study Period Start:	=	01/01/2013
Study Period End:	=	31/12/2014
Date Study Completed	=	28/01/2015
Number of Months in Study Period	=	24
Geocoding Accuracy Rate	=	95%

Crime Group	Total
Assault	0
Auto_Crime	0
Burglary	0
Criminal_Damage	0
Fraud	0
Other_Serious_Offences	0
Sexual_Offences	0
Thefts	0
Grand Total	0

A Table of Crime in the Study Area (Above) and corresponding Graph (Below)



A Table of Crime by Crime Group and then Crime Type

None

